

Percent American Indian Population

In 2010, the total population of the County of Montana was 1,019,988. The American Indian population is 21,211 or 2.1%.



Geospatial Technologies

Mapping our world

What is Geography?

The study of the Earth's surface, the connections between places, and the relationships between people and their environment.



Spatial

Contextual

Holistic

Cultural

Physical



Space



Place

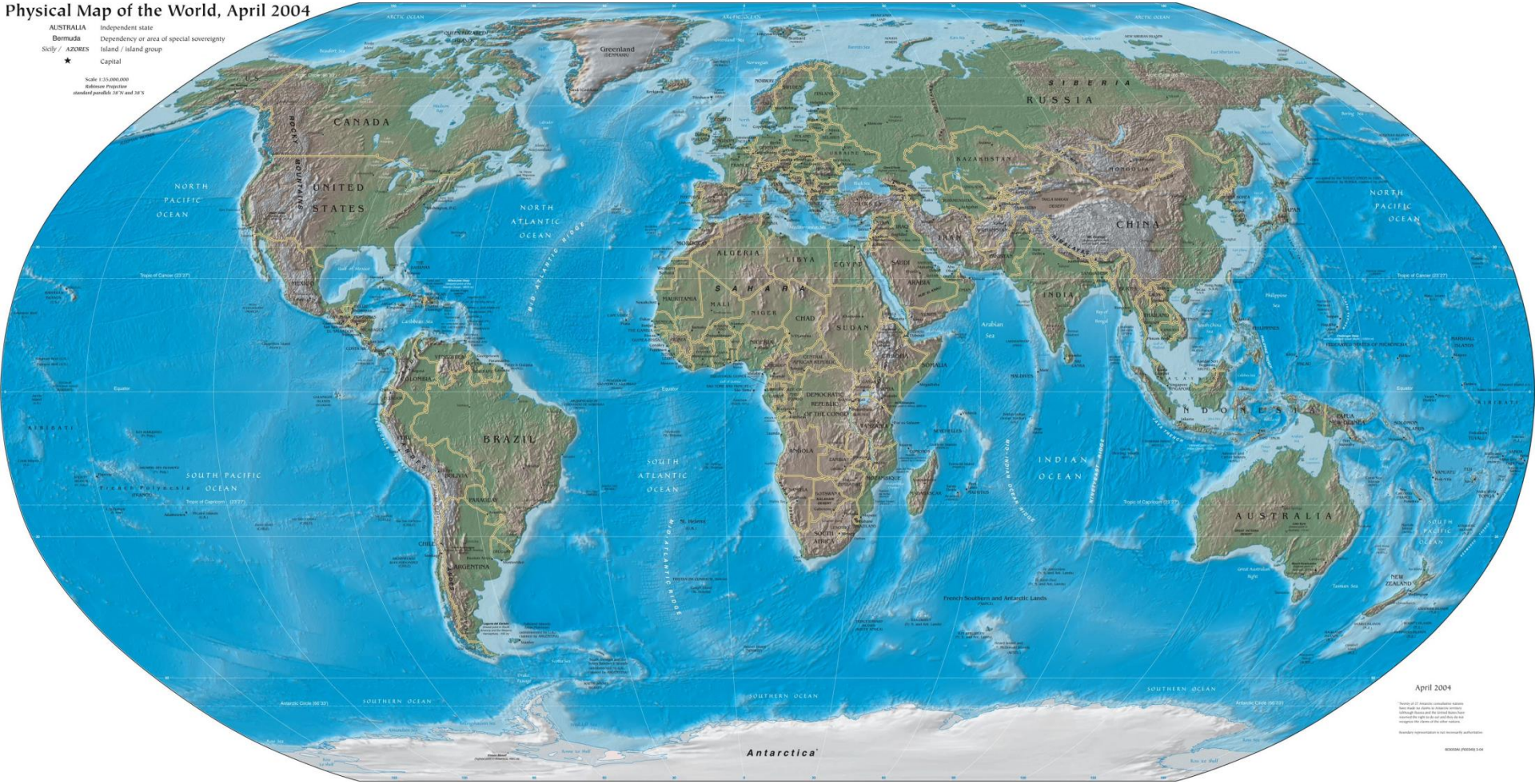


Maps

Physical Map of the World, April 2004

AUSTRALIA Independent state
Bermuda Dependency or area of special sovereignty
Sicily / AZORES Island / island group
★ Capital

Scale 1:35,000,000
Robinson Projection
standard parallels 34° N and 38° S

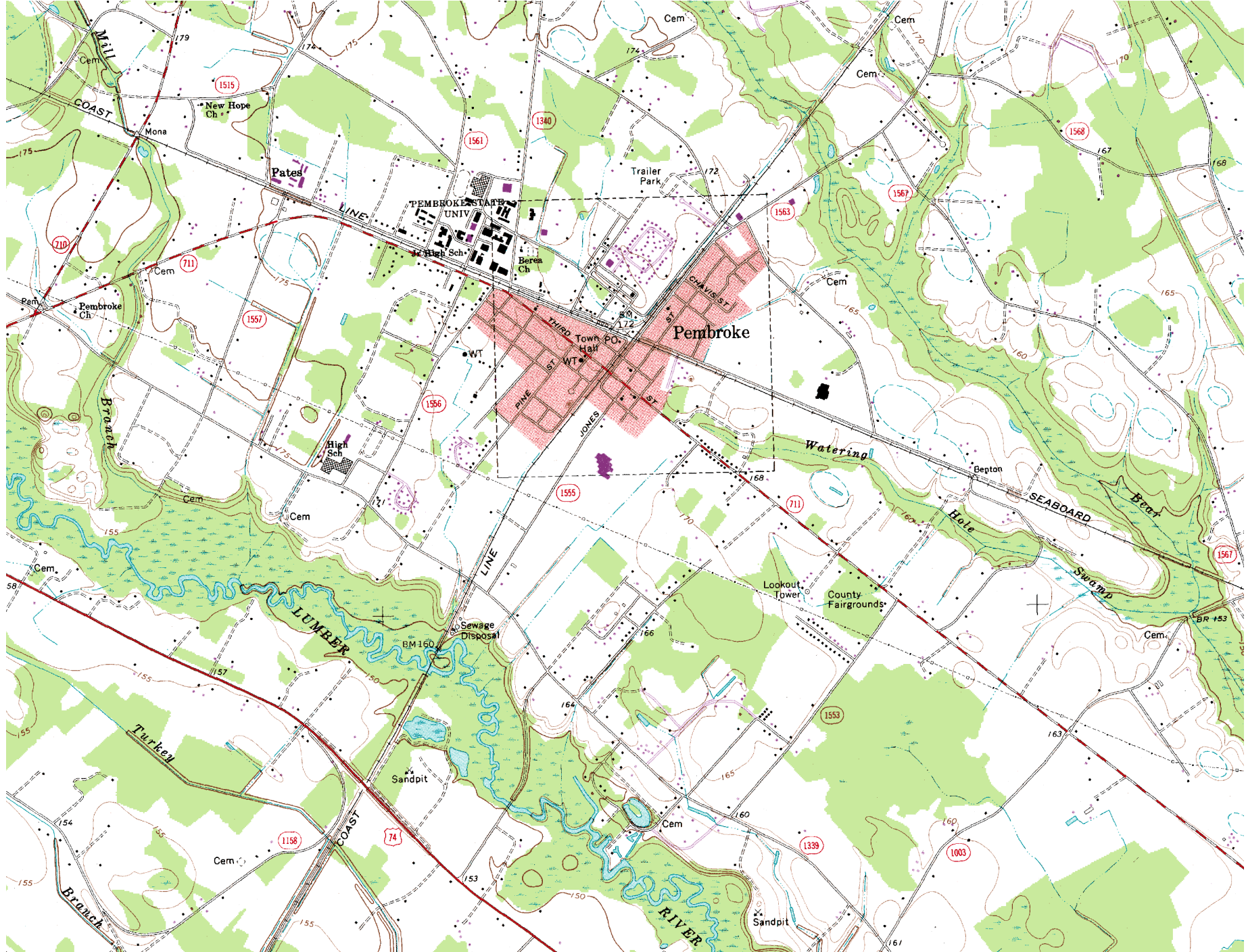


April 2004

Source: U.S. National Oceanic and Atmospheric Administration
Map data by Geographical Names Authority
Map design by National Geographic Society
Map projection: Robinson
Map scale: 1:35,000,000

© 2004 National Geographic Society

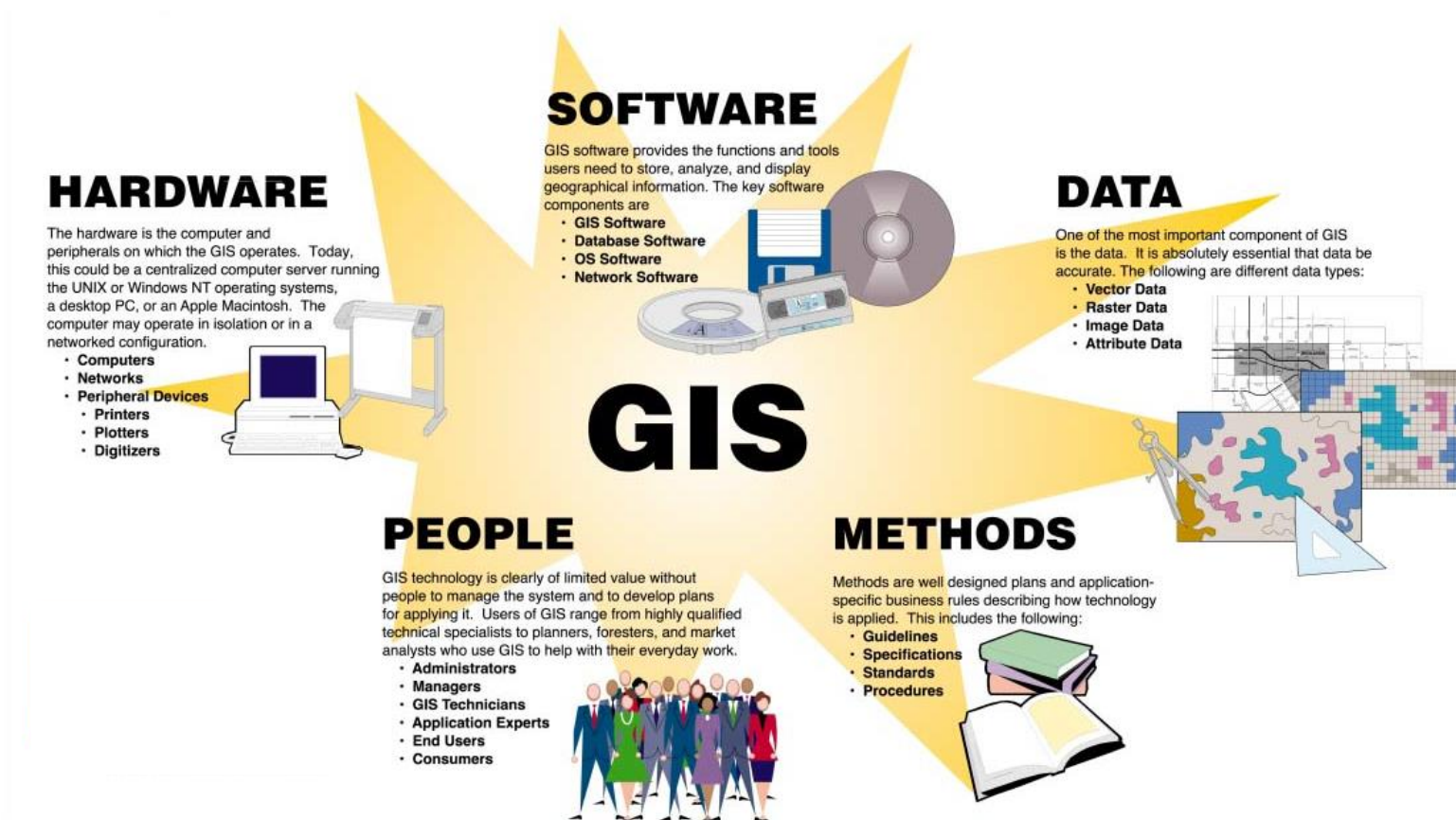




Geospatial Technologies

- Geographic Information System
- Global Positioning System
- Remote Sensing
- Web Maps
- Mash-up
- Virtual Globe
- Digital Cities

Geographic Information Systems

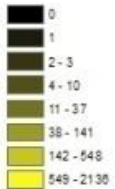


Geographic Information Science

UNC Pembroke Student Residency 2008



NORTH ↑



Number of students enrolled at UNCP from each county in 2008.



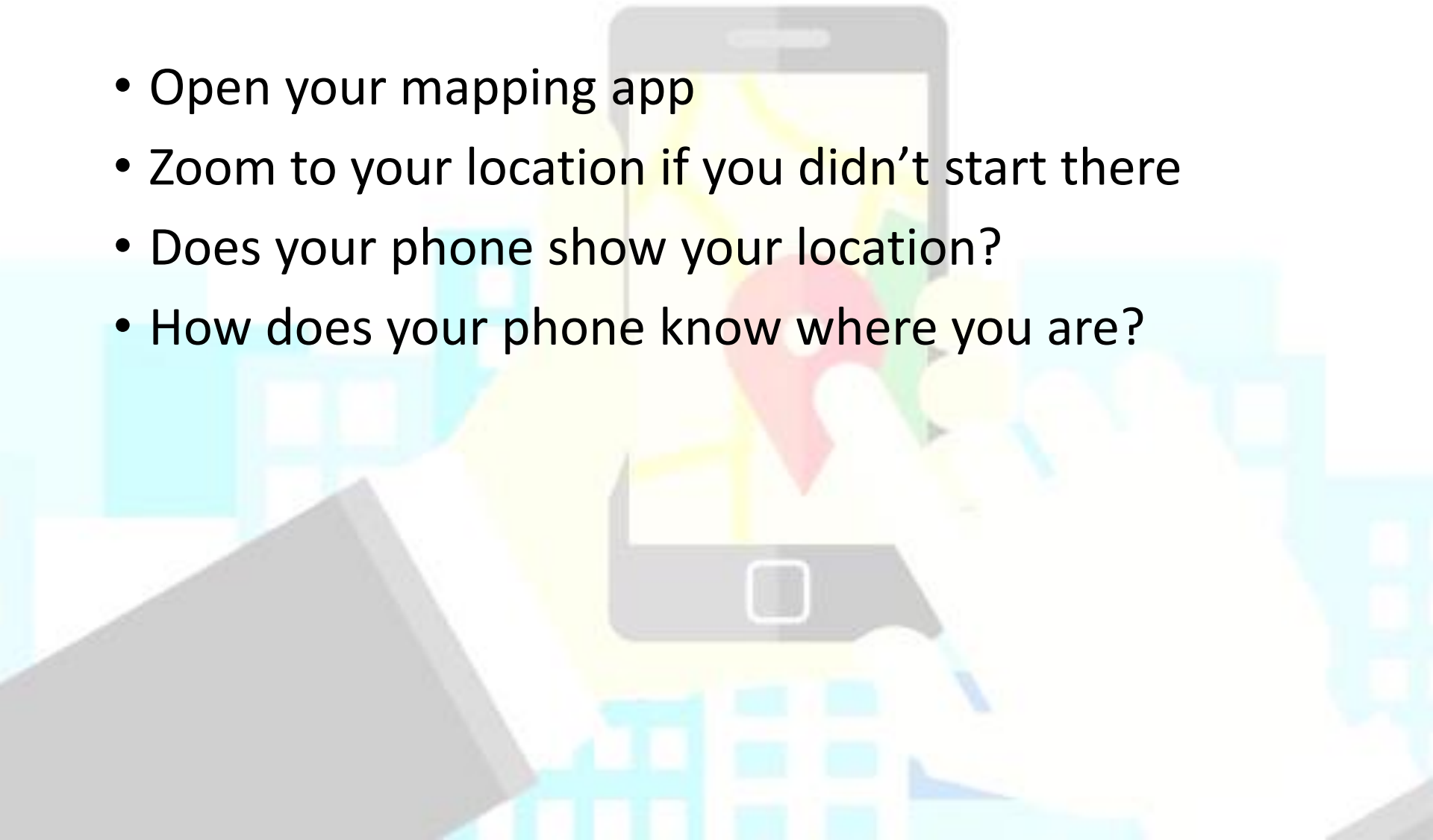
Global Positioning System

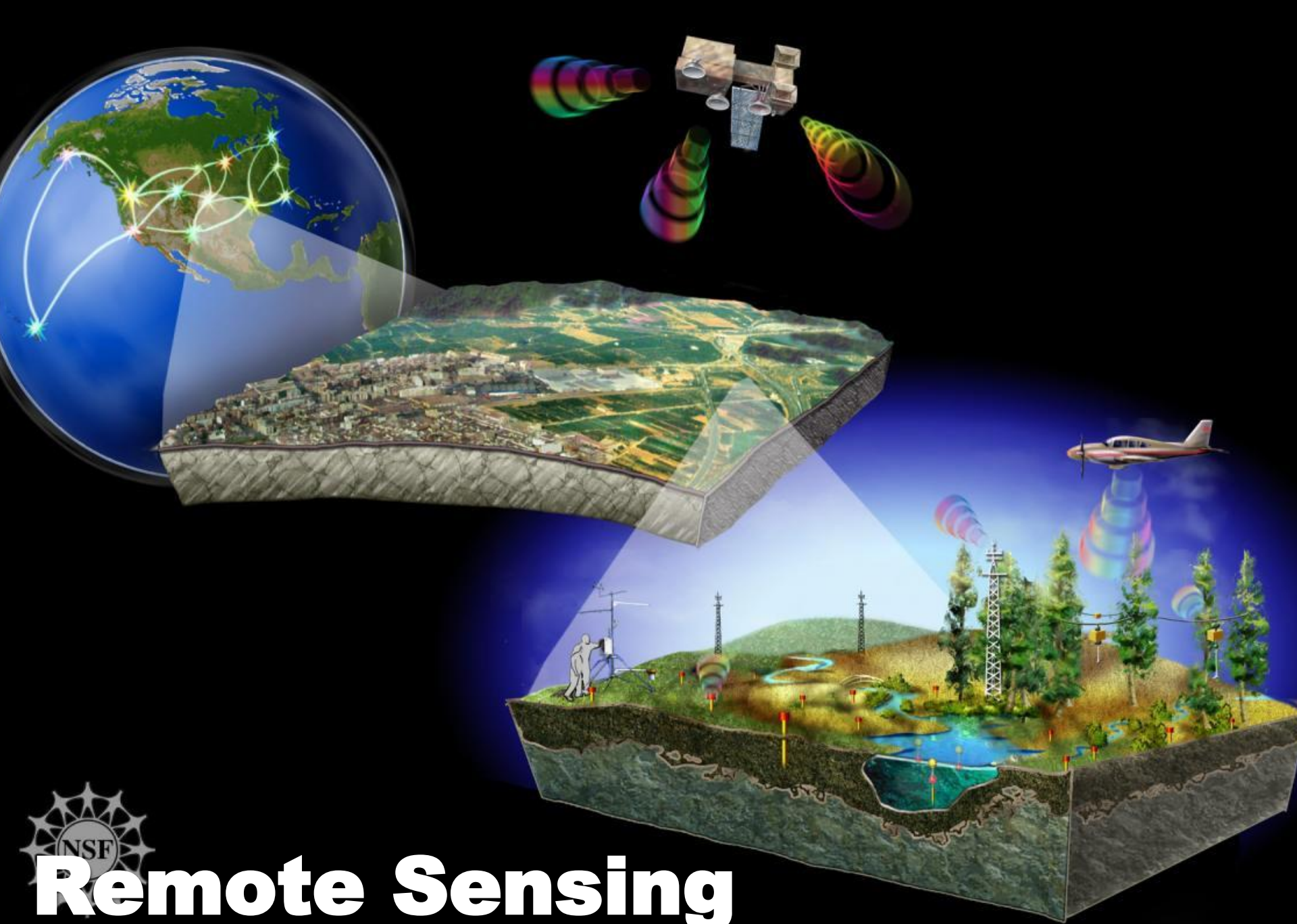


Location Based Services

Have a phone?

- Open your mapping app
- Zoom to your location if you didn't start there
- Does your phone show your location?
- How does your phone know where you are?

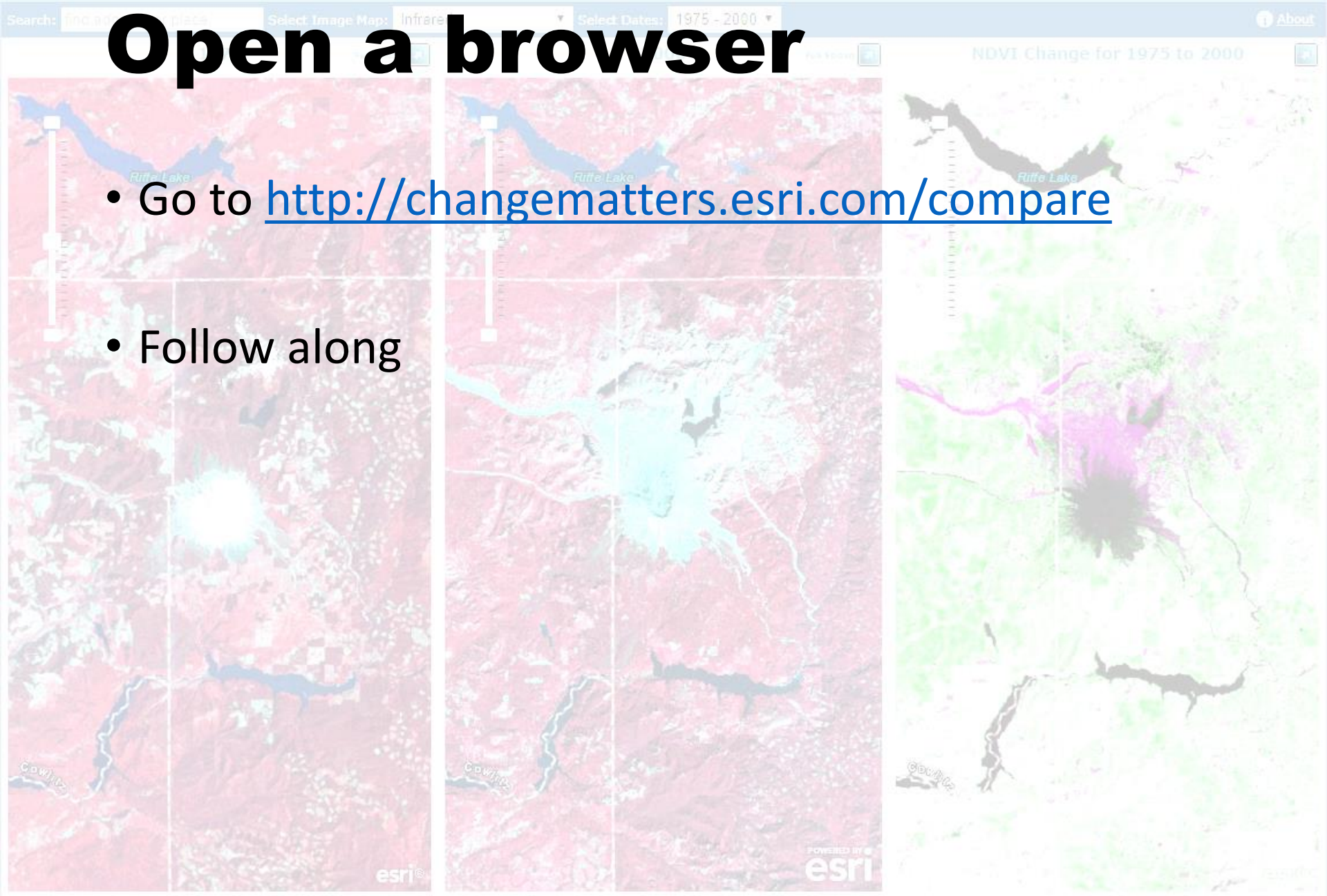




Remote Sensing

Open a browser

- Go to <http://changematters.esri.com/compare>
- Follow along



Web maps and web gis

- Go to <http://maps.google.com>
 - Take a minute to find your house
 - Then find where we are on the southeast (bottom right) corner of the UNC Pembroke campus
- Go to <http://arcgis.com/home>
 - Click on **Map** at the top
 - Find your way back to campus
- Go to <https://whereisbart.com/>
 - Time...

3D





Still in a browser

- Go to <http://arcgis.com/home>
- Click on **Scene** at the top
- Follow along



Other samples

- Nations - <http://arcg.is/1v1DSi>
- Conservation (GA) - <http://arcg.is/H8Wqn>
- Conservation (WA) - <https://arcg.is/0L1DSj>
- Landscape - <http://arcg.is/08yz4e>
- Arctic - <https://arcg.is/1ia8bO>





Keeping up in an era of change